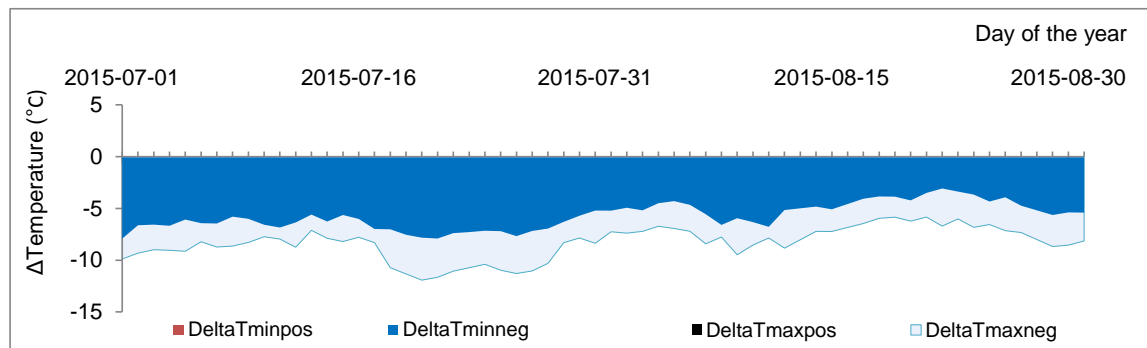
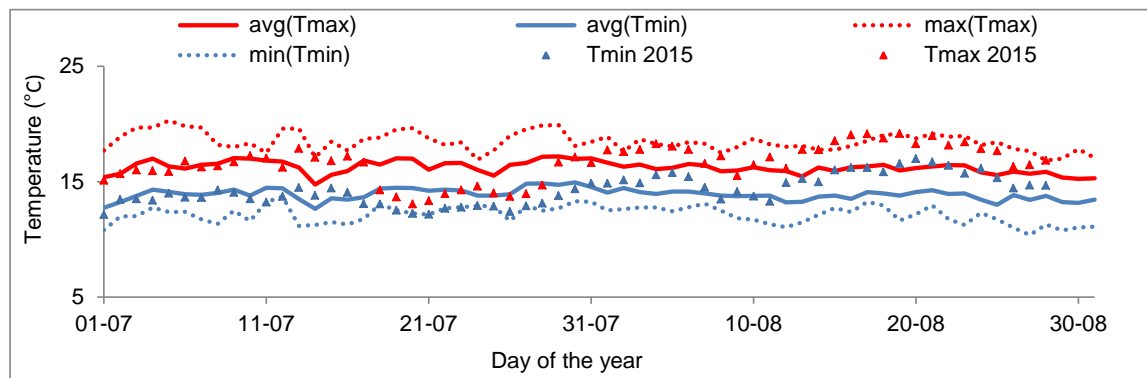


stationName	Wilmot River
Riv	Wilmot
RivBas_1	Wilmot
RivBas_2	
RivBas_3	
Province	PE
SourceData	EC_Atlantique
Latitude	46.39
longitude	-63.66
min(an_yr)	2005
max(an_yr)	2015
count_an_yr	11



- a) Summer temperature data for 2015 in relation to historical temperature metrics.
- b) Trend in the yearly frequency of summer warm events;
- c) Amplitude and duration of warm water events in 2015. Thresholds for warm events are defined by $T_{min} \geq 20^{\circ}\text{C}$ and $T_{max} \geq 25^{\circ}\text{C}$. The most stressful events occur when $T_{max} \geq 25^{\circ}\text{C}$ is observed simultaneously with $T_{min} \geq 20^{\circ}\text{C}$.